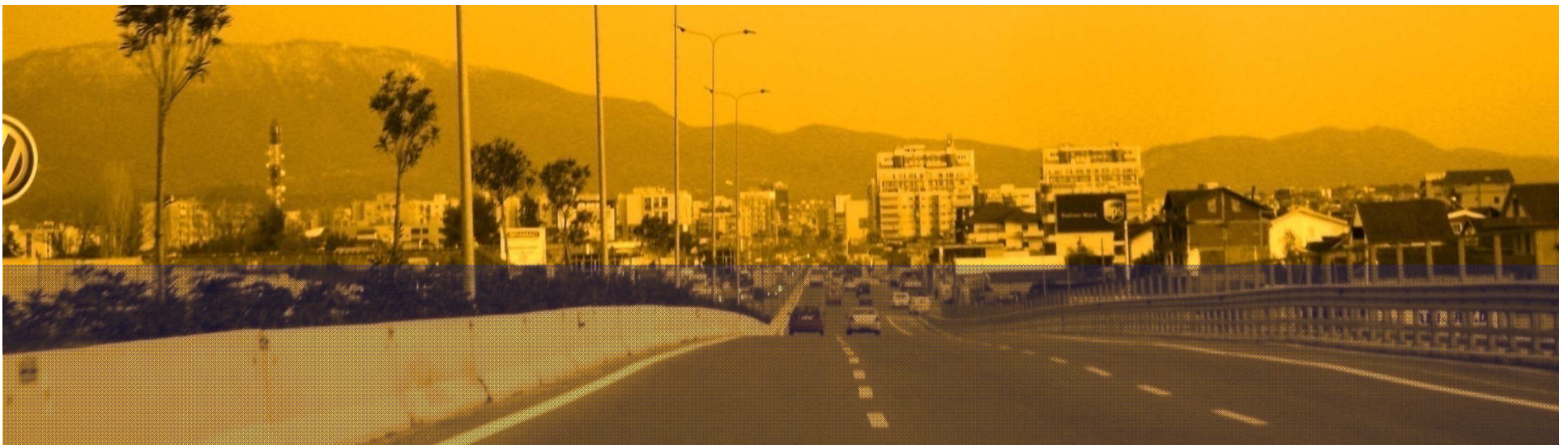
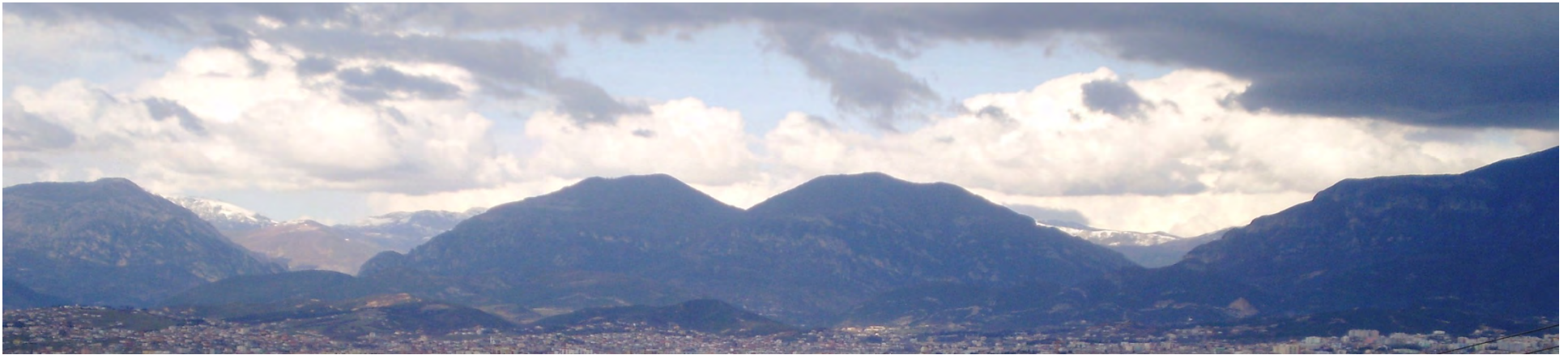




... Issues of urban design and planning in Tirana ...





1980 . . . Dead . . .





... city alive ...





... the center for the "New Tirana" started ...

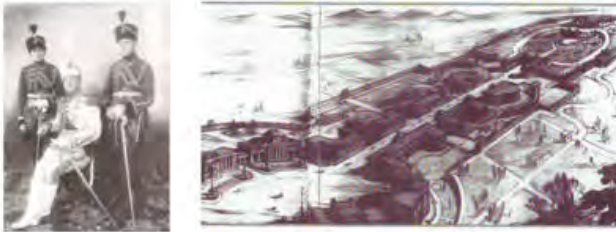


Towards the city
... alive

1614 Nascita di Tirana



1912-1942 Dall'indipendenza alla monarchia. La visione italiana



1942-1990 La dittatura comunista e l'economia centralizzata



1992-2002 Postcomunismo: dall'uguaglianza al capitalismo



2002-2009 Recupero dello spazio pubblico



new aspects ...

unknown...

???

City and architecture "Founding" and "Re- founding"

1912-1942: The Monarchy and the
Italian occupation Period ...
The First "Re-founding"

1944-1991: The Centralized
Economy ... The Second "Re-
founding"

1992 - 2000: Post communism:
from social equality to
capitalism ... The Third "Re-
founding"

2000-2009: can the city
provide more opportunities?


2009-20xx: the challenge
continues ...

What are the main characteristics of **transformation of urban space and image** in Tirana in the **socialist and post socialist** period

... the future ...

The challenge

Can we still “**recapture**” “reshape” the urban form?



The metropolis has the added attraction that,
through what it has become, ...
one can look back with nostalgia at what it was ...

I Calvino

“Reframing filter”

Projecting in the future

The beauty of periphery

.... Even in the most degraded areas ... the key of solution stays there

... if you **can** find any **element in our** city that if
disappeared ... **you** would look back with nostalgia
... just think that with your pictures **of** today ...
maybe you fixed the postcards of the **future**
nostalgia ... even an **abandoned** railway truck can be
the “**bridge**” between the two Tiranas ...

How Tirana took this “shape”?

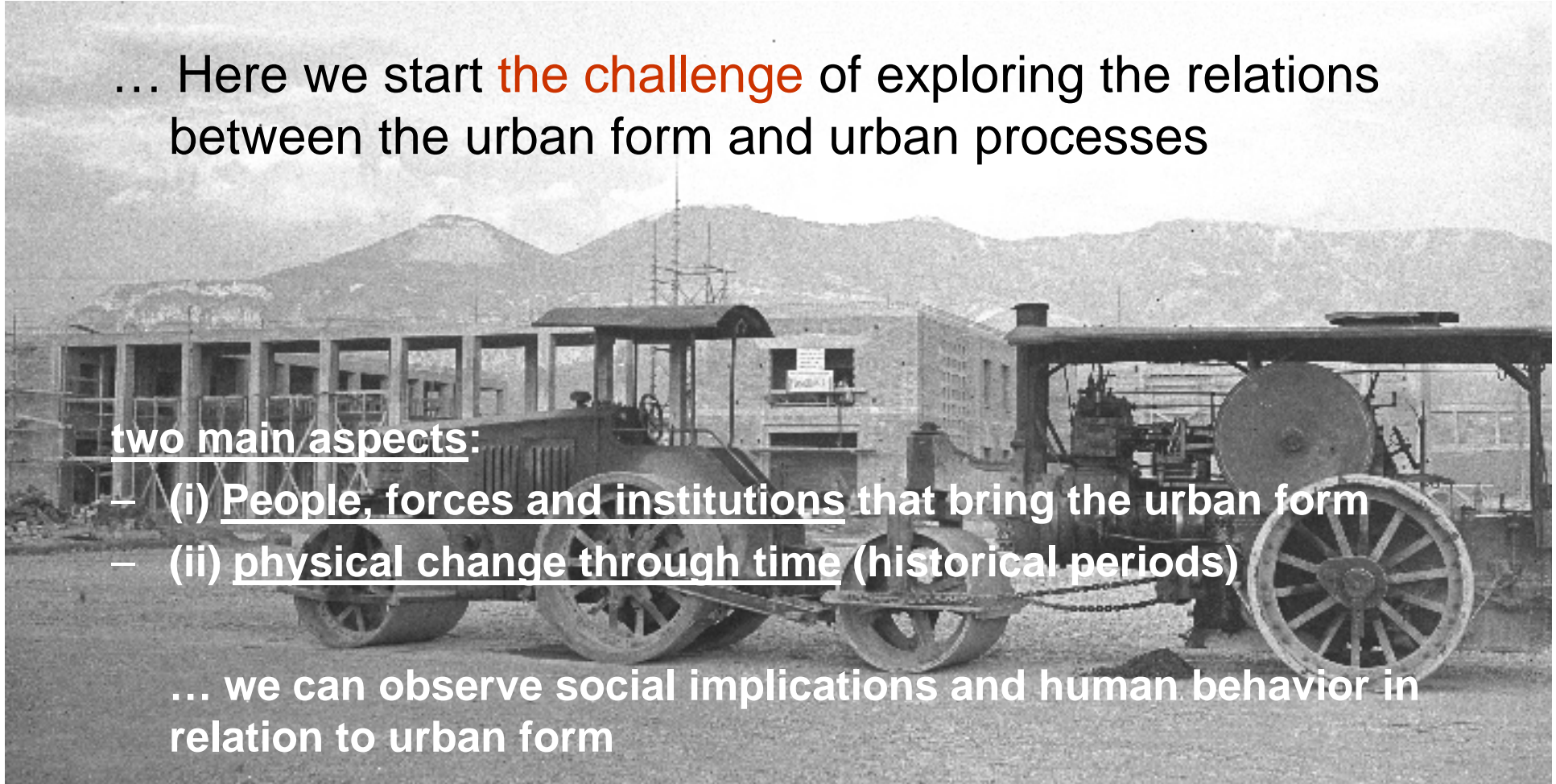
... Here we start **the challenge** of exploring the relations between the urban form and urban processes

two main aspects:

- (i) People, forces and institutions that bring the urban form
- (ii) physical change through time (historical periods)

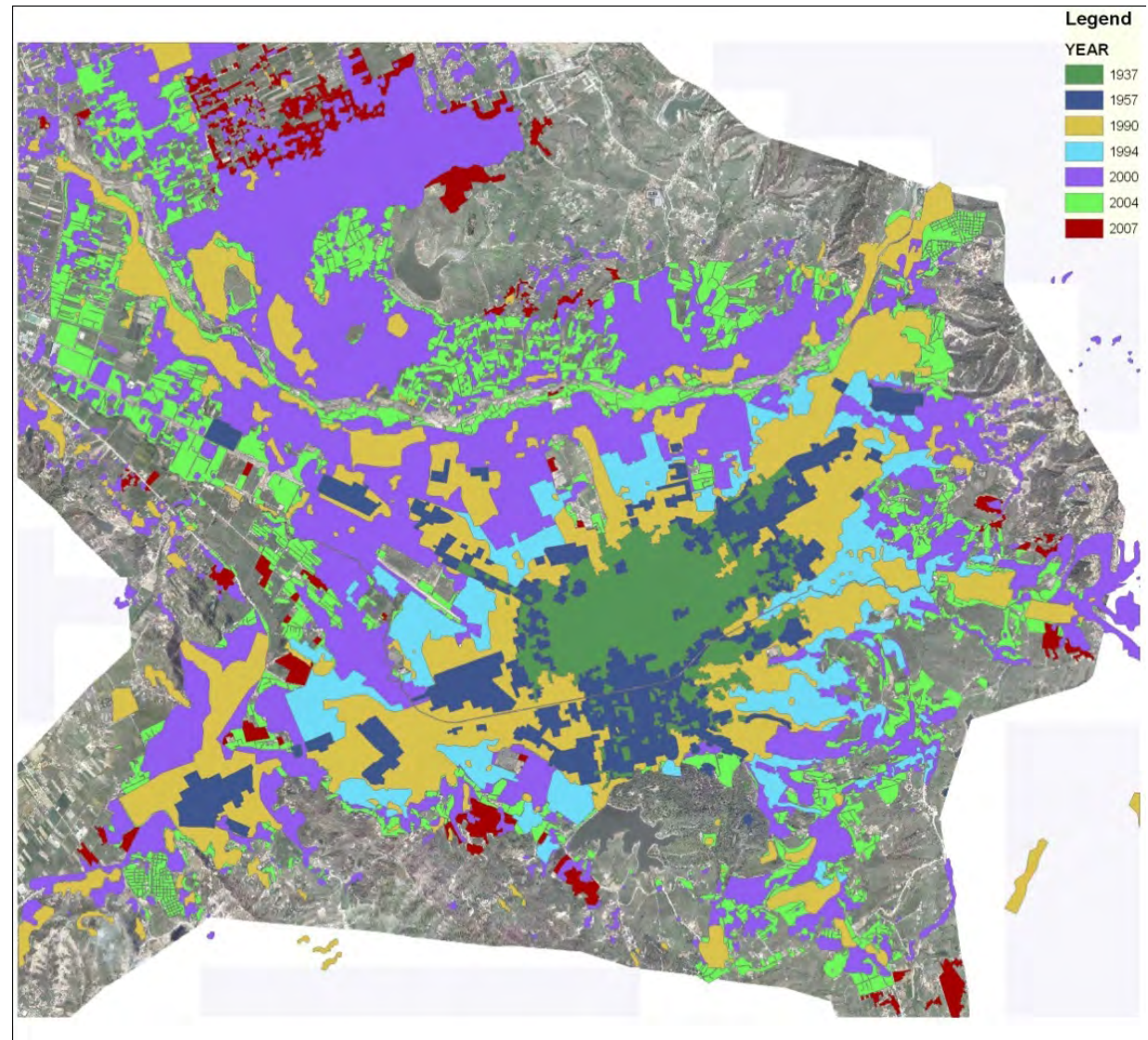
... we can observe social implications and human behavior in relation to urban form

... Does Albanian type of public space / place engender social interaction or discourage it?



Repositioning of Tirana in the new metropolitan settings

- Five fold increased from 1991 to 2001
GT:
 - 12km² --- 56 km²
- Massive population expansion in GT:
 - 7-5% increase during the same period



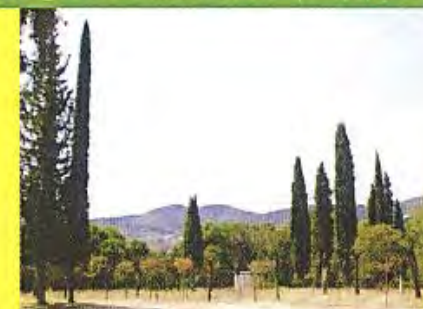
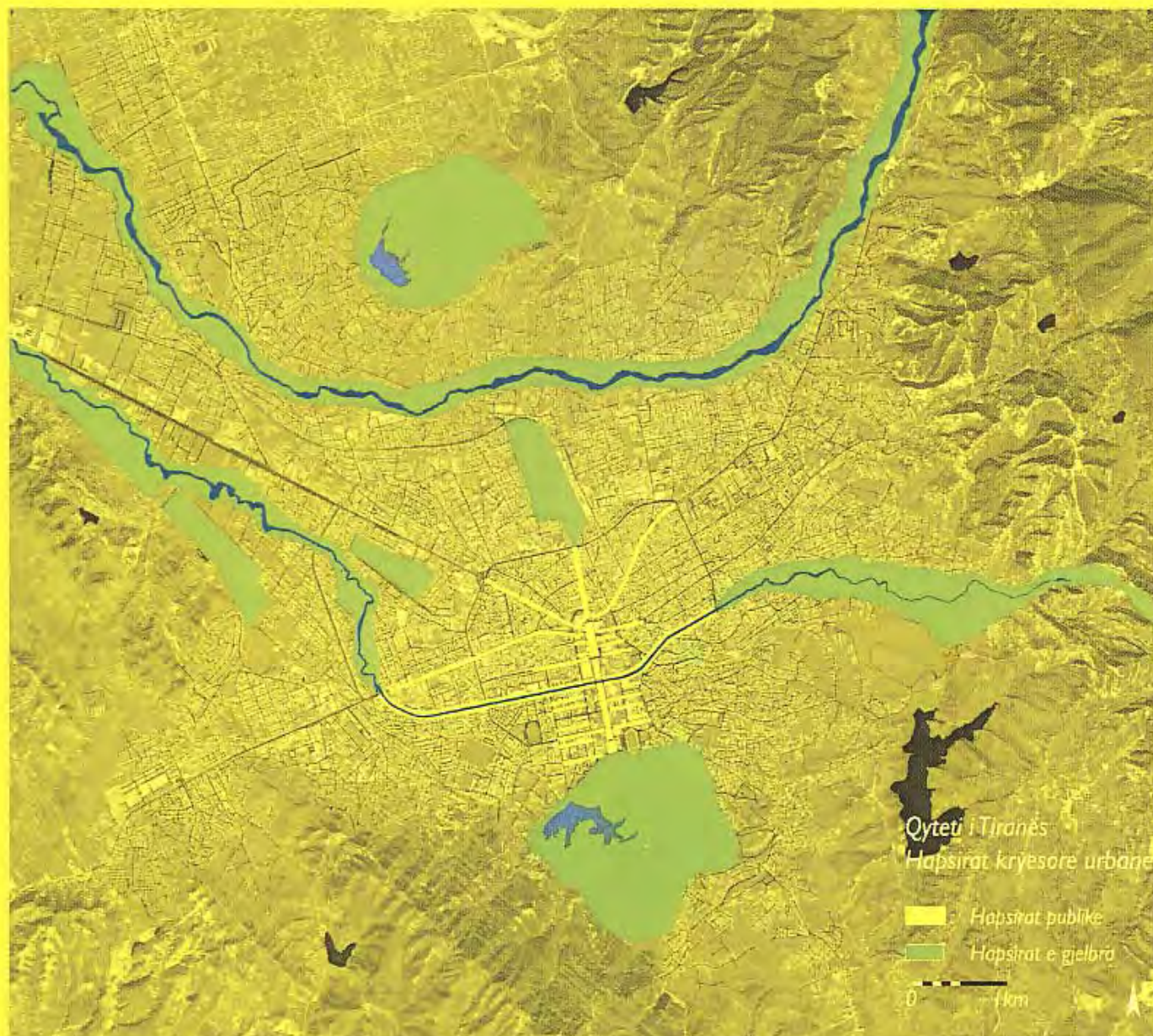
- **Necklace of (parks), river corridors**
- **The city three river system from east to west ... crossing the city and the territory**
- **Vital role in structuring the city – regeneration and the future development**

Repositioning of Tirana in the new metropolitan settings



Necklace of parks and three river corridors

HAPSIRAT E GJELBRA DHE SHESHET PUBLIKE



Parku i Lejant



Lumi i Lones



Blv. "Dëshmorët e Kombit"



Hapësira e lirë në Tiranë

... representative city “cells”

This unprecedented growth influenced the **urban morphology** (big and small scale)

- Traditional areas
- Housing blocs built during the communist regime
- Post ‘90
 - Inner city densification
 - New development in periphery
 - Informal areas
 - Other areas (commercial and production activities)



socialist period

standardized typology of transformation ...

Industrialization program of the country ...

...regulatory plans

Transforming the city based on the

Replacement strategy of the old / traditional neighborhoods

Expansion of the city in new areas ...

Instruments

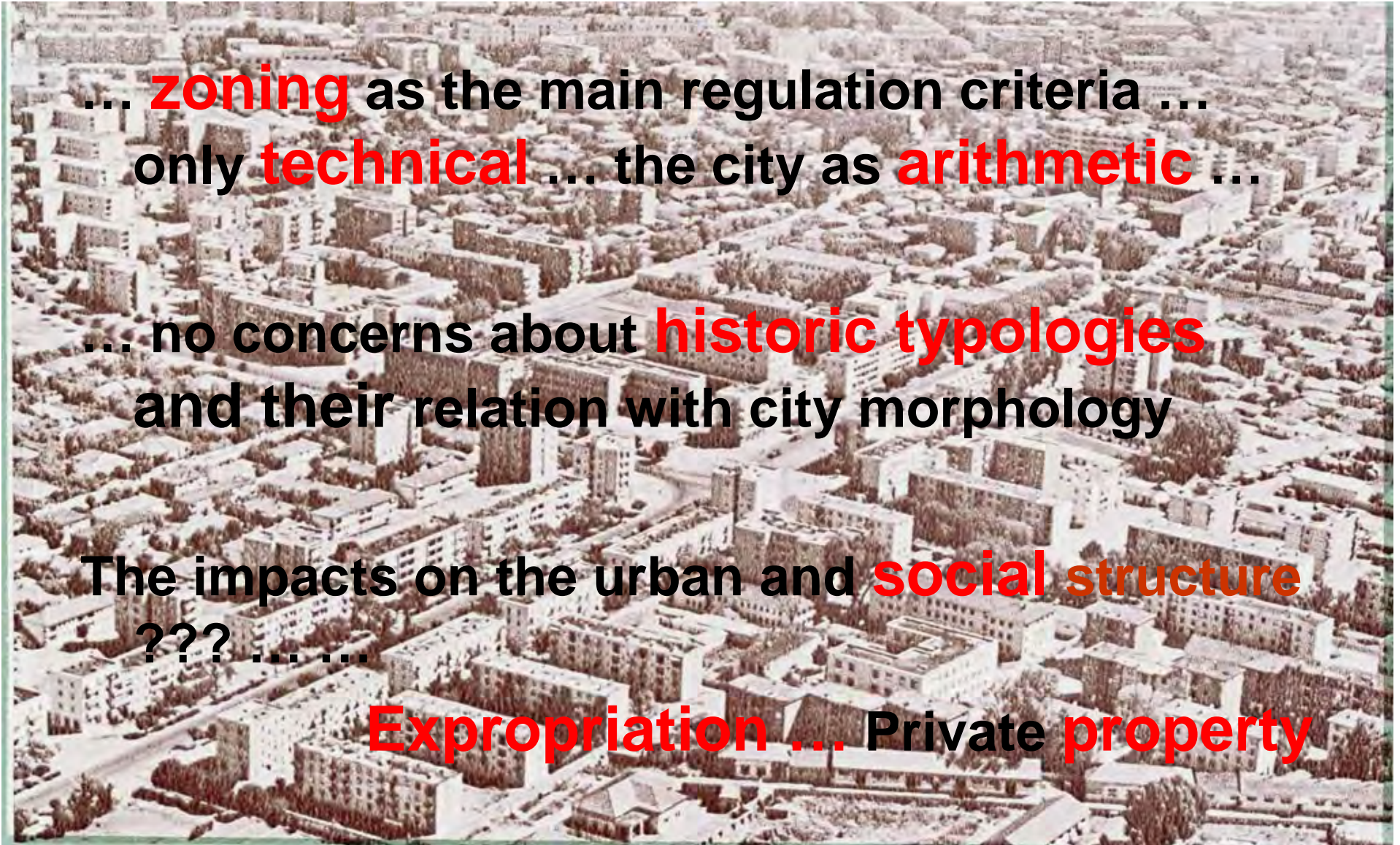
“paradise” for urban planners

... **zoning** as the main regulation criteria ...
only **technical** ... the city as **arithmetic** ...

... no concerns about **historic typologies**
and their relation with city morphology

The impacts on the urban and **social structure**
???

Expropriation ... **Private property**





... the replacement strategy
started from the urban core ...

Urban patterns inherited after the second world war ...
URBICIDE



Violence against architecture

...Impacts on urban fabric

The destruction of buildings is a **strategic maneuver**

- Urbicide is a **struggle** into the sphere of organized space (Bill Millard)
- **Erosion** of neglected (Dajti hotel)
- A city can be destroyed also through acts of **construction**
 - Socialist
 - Post-socialist



APARTMENT BLOCS, TYPICAL DURING THE COMMUNIST PERIOD
Replaced traditional areas; or developed as new extensions of the city



... inhuman ...

... the “essence” of
basic needs”

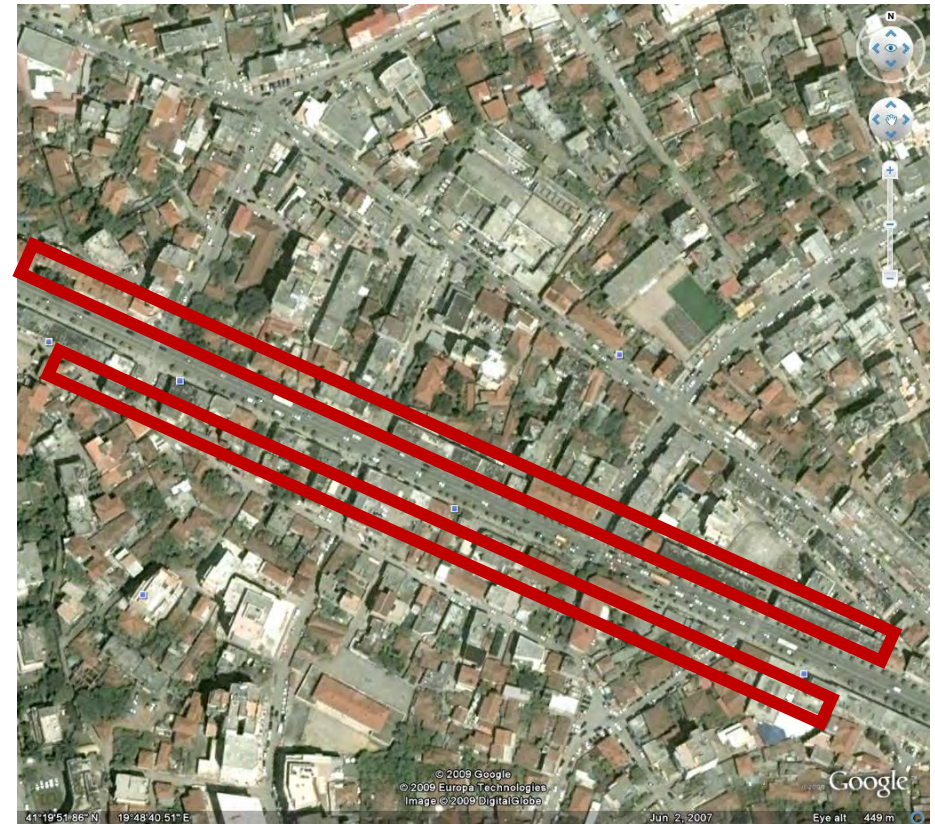
... not the place to offer
more
opportunities ...

No **architectonic**
representation ...

this was what we inherited at the beginning of '90s

Lack of vital energy
... **clean cities = “sterility”**
deprived from life energy ...
... **no-ones** space





... the syndromes started ... much time before ...
“Artificial” insertion ... urban “curtains”



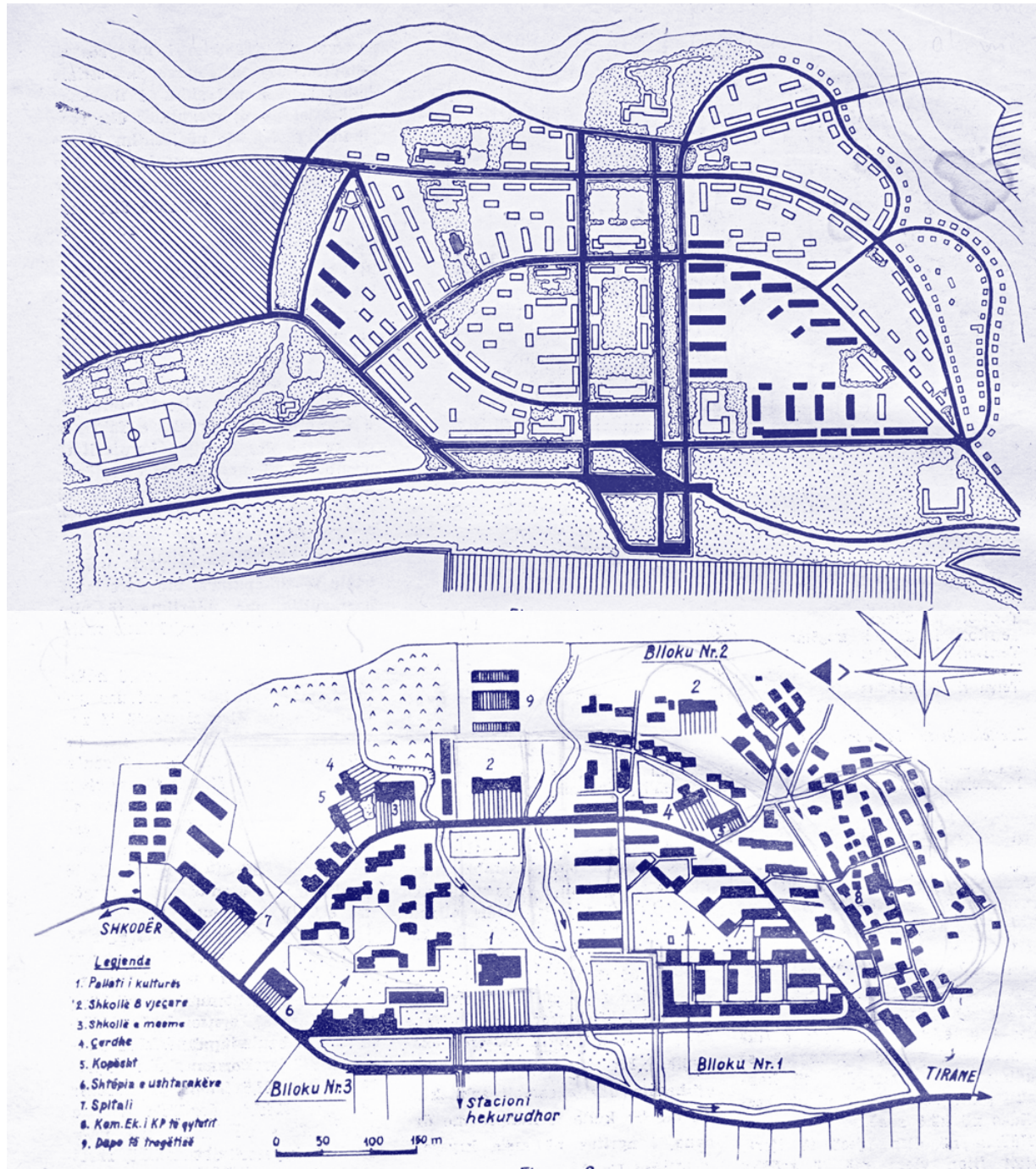
“Voluntary” work
totally transformed
the natural landscape

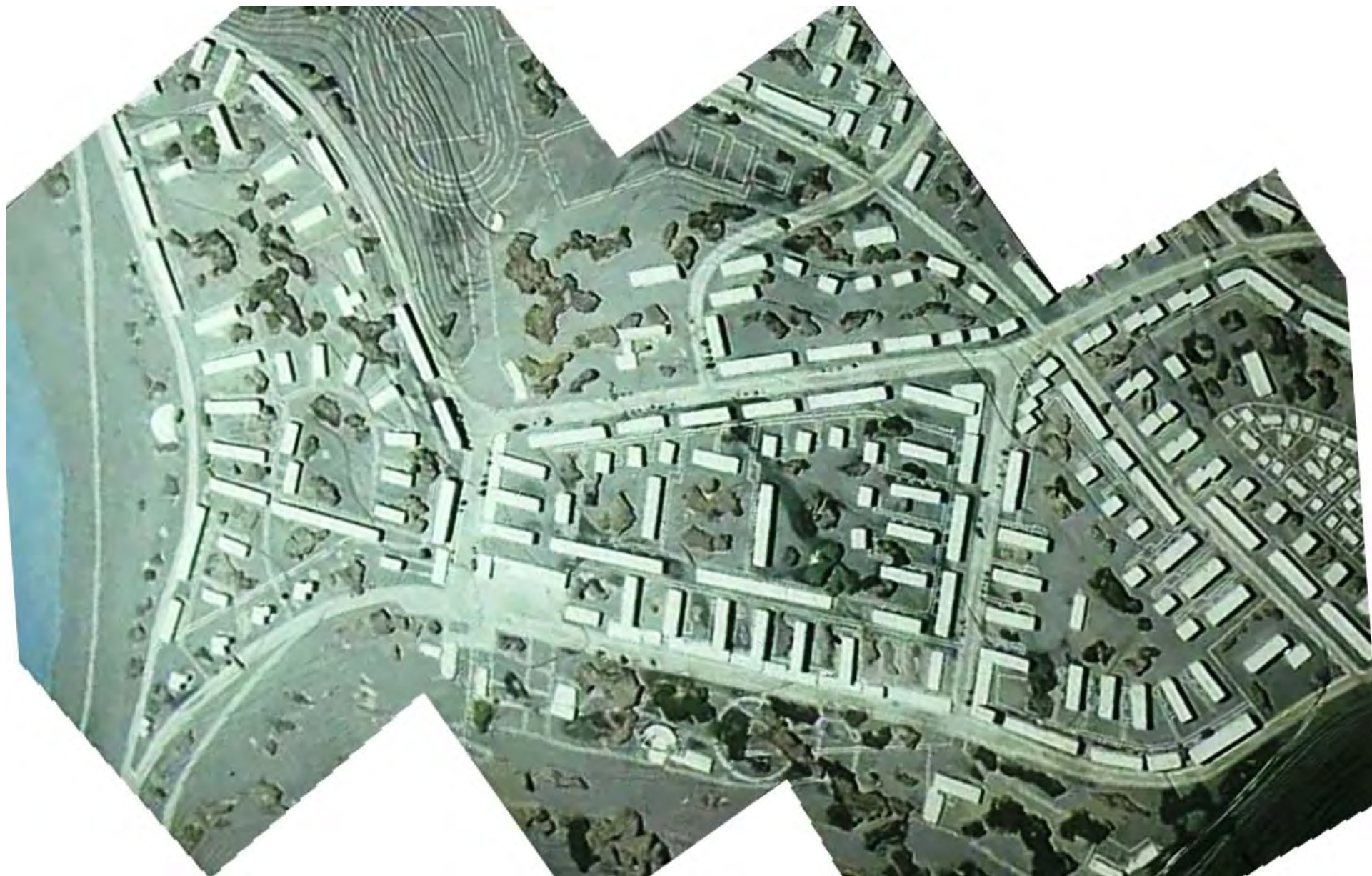
the beginning of some
of the **today's**
environmental
problems



KAT
SHIKU

Foundation
of the new
towns of
Kukës i Ri,
Laç,
Cërrik,
Ballsh,
Çorovodë,
etc ...





Project for the new town of Kukes



Kukes



© 2009 Europa Technologies
© 2009 Tele Atlas
© 2009 Cnes/Spot Image
© 2009 Google

Google

42°04'38.46" N 20°25'27.11" E

Jul 20, 2003

Eye alt 4.84 km



The "new town" built during '70s
nowadays is surrounded by informal buildings





... after '90s approaches ...

Interventions ... “instruments”

... from **replacement** interventions / expansion
big scale (neighborhood)...

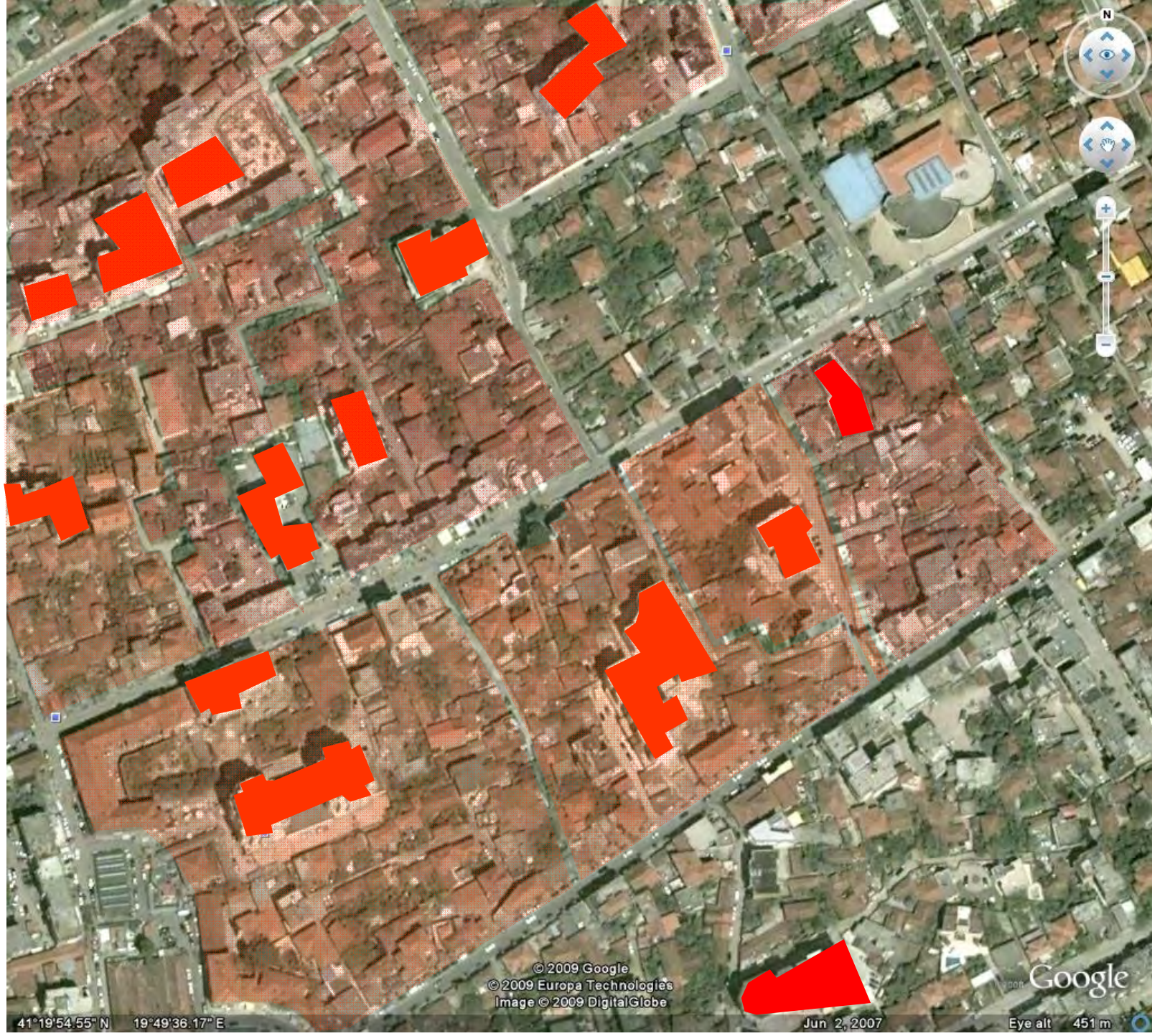


Erosion of space in traditional areas =
replacement (small scale)
“**fill-in**” = gradual “space occupation” ...
... **plot based** ...
interventions



... inability to create /maintain **coherence** at big scale...

**Inappropriate building typologies
“Tensions” in the use of space**



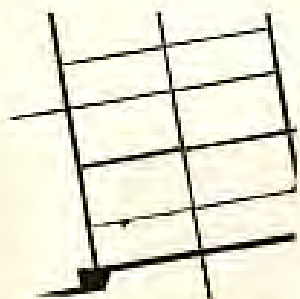
TRADITIONAL AREA EROSION



Traditional areas

Eroded and neglected

Reticular
Pattern



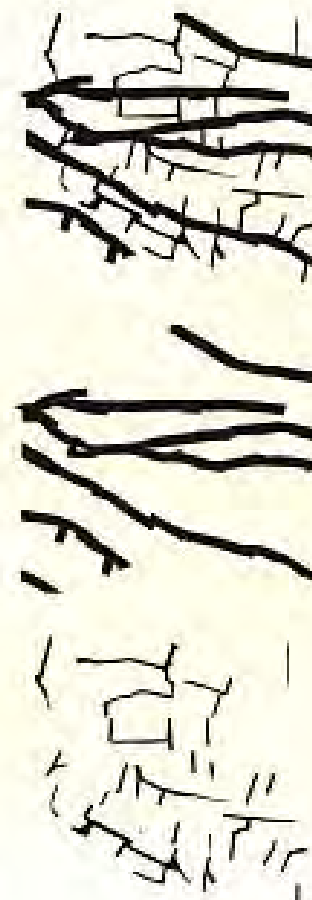
Radial Pattern



Straight Linear
Pattern



Curved Linear
Pattern



Cul-de Sac
Pattern



An aerial photograph of a courtyard between old, multi-story buildings. The walls are in various states of decay, with some showing exposed brick and others having peeling plaster. The ground is covered in dirt, trash, and some sparse vegetation. A staircase with a graffiti-covered wall is visible in the lower right. The overall scene conveys a sense of urban decay and neglect.

“URBICIDE”

Eroded and neglected



Post '90s

Infill development .. In the city center

Replacement of small houses ... with high rise (in periphery)



© 2009 Google
© 2009 Europa Technologies
Image © 2009 DigitalGlobe

41°19'28.92" N 19°48'53.74" E

Jun 2, 2007

Eye alt 451 m















Nga tekstura uniforme ne tekstura teresisht te perziera





New developed areas ... high rise buildings in the periphery



Google

41°20'23.40"N 19°48'20.39"E

Jun 2, 2007

Eye alt 451 m

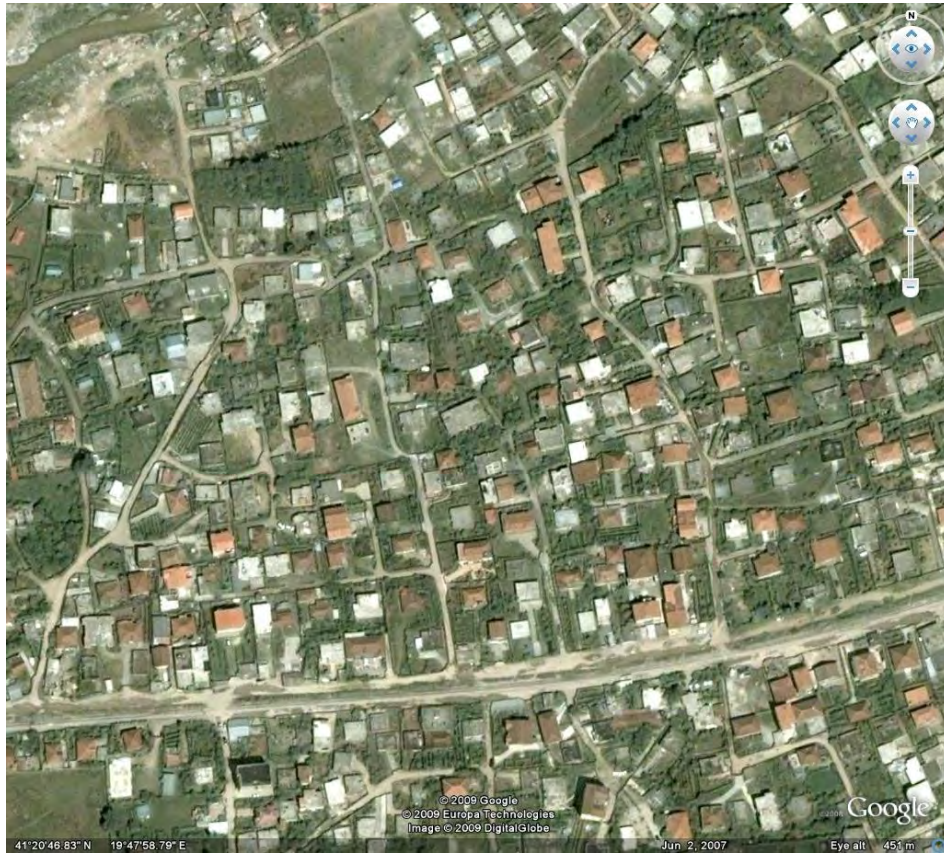




**New developments in periphery ...
High rise private developments ... and social housing**



High income residential area – new expansions



Informal peripheries ... new expansions



The future informal “garden city” ...



Rur-urban

**Tendencies
For the
creation of
a linear city
With economic
activities**

**Everything in
the hands of
Private
Developers
And land
owners**



“Highway city”

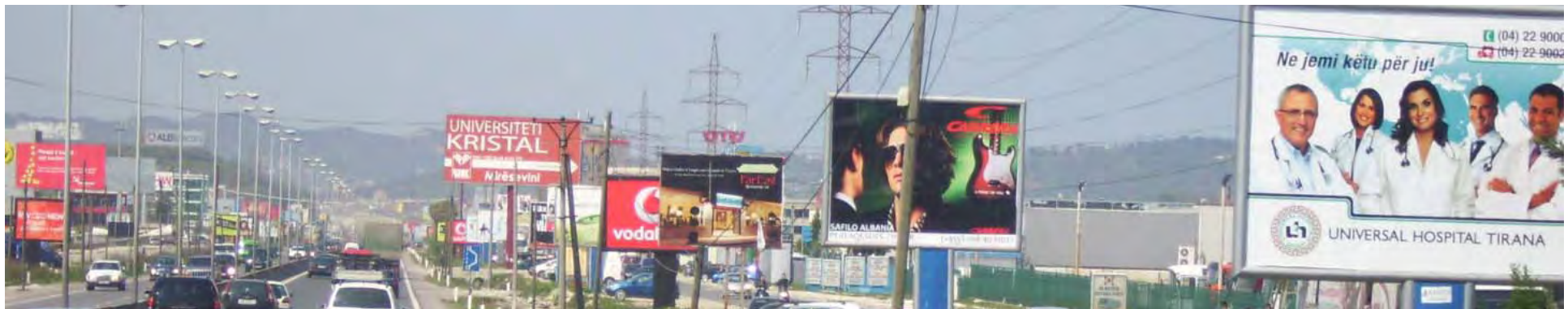
... Albanian commercial landscape

Reference to Venturi “Learning from Las Vegas”



Communication dominates space as an element in the architecture and in the landscape – for a new scale of landscape

Graphic signs in space has become the architecture of this landscape



The quality of being an oases in a hostile context
 ... the ability to "catch" the visitor in a new
role : one may imagine oneself ... in a different and
 various places ...





... walking from one store to another is not possible
because the interaction is only by car and highway ---
even they are adjacent ...



Sometimes the building is the sign
... kind of architectural shelter



"Architecture" in this landscape becomes symbolic in space
rather than form in space



... driving ...

The sign at the front is a vulgar extravaganza,
the building at the back a modest necessity



Special relationships are made by symbols
more than by forms

Symbol dominates space ... Architecture is not enough

The space is unified only by highway signs,
their particular position in space,
their graphic meanings that identify and unify
the megatexture





Big signs and little building is the rule ...

Signs are more important than the architecture

If you take the signs away, there is no place

The image of the commercial strip is chaos

... the "friendly gasoline stations" parade their universality ...



Front footage on the strip has not yet reached the value ... and
parking is still the appropriate filler ...

The parking lot is the parterre of the asphalt landscape

- 
- An aerial photograph of a densely packed urban area, likely in a developing country. The image shows a variety of multi-story apartment buildings and houses, many with balconies and satellite dishes. The architecture is a mix of styles, with some buildings having colorful facades (yellow, red, green) and others being more plain. The buildings are built on a hillside, and the terrain is uneven. In the background, there are large, rugged mountains under a clear sky. The overall impression is one of rapid, uncontrolled urban growth.
- The uncontrolled urban process created the **unconscious city** without shared aims

“**unreadable urban text**”: chaotic pattern uneven texture
inappropriate use of building typologies

Why??

- Low **enforcement** – **no** enforcement
- Life style
- **Profit maximization** (builders, land owners ...)
- Traditional **education of architects** and urban planners (lack of consideration of the contexts)
- **Planning approach: blocking** Vs enabling

Professional situation

Narrow scope of architecture ... routed in the “traditional **education” from civil engineering** ...

Focused **only on technical and engineering concepts**
– pure rationalist model – mixed with socio-communist limitations

... educated **how to “divide” the space** but not how to **“create” the space** ... this impacted the development during the communist regime ... and this of today

Lack of critical judgment **and professional critique**
about the damages in the past and this of today

One example ...

“The geometry of distances” ... the alibi

The rule that destroyed our cities

The space understood only in terms of 3d geometry

No character ... no care about the lived space

... “hapesira merr kuptim jo vetem nga boshlleku ne vetvete, por nga elementet konkret te vendit” – kjo ben diferencen Heidegger

Lack of inspiring visions for future development



Positivist approach – reframing

- Urban fabric in Tirana is heavily damaged ... paradoxically here stays its specificity of today ... the challenge is to transform it in a more **conscious** urban condition ...
- ... after that ... it is clear that a **change** is needed ... starting from a thorough understanding of the “urban text” ...
- TRANSLATE it IN AN urban design strategy

Reframing: the architect as “facilitator”

... all **behavior takes place in some context ...** The meaning, **depends upon the “frame”** we perceive it

When we **change the frame we change the meaning** (Bandler and Grinder, 1982).

Framing = contextualization



reframing = **re-contextualization**

Positivist approach

Reframing the existing in a new identity ...

Assuming: CONSCIOUS conditions AS a **remedy** TO the lost IDENTITY

Reframing should guarantee the passage from :

- Unconscious  Conscious (shared experience)
- “unreadable”  “urban text” ... reading the hidden potentials

REFRAME results

Instead of “killing” the richness of the context we can recreate the “unreadable”

CAOTIC AND UNREADABLE as --- **Complexity** and multi-layered phenomena --- **richness** of the urban patterns / specificity

Anti-urbicide strategies

Examples of improvement through the **design process**

- ... ability to **conjecture** “a form” with catalytic role ... in favor of **public consciousness**

Berlage institute study

- “**catalytic**” **lines** of influx and / or nodes
- “sanitation” of chaos through **collage technique**

Better understanding of the “**latent**” **structural features**, centralities

Collage model

Rowe, Koetter

- A theory of **competing powers** to establish a more likely **comprehensive city**
- Re-establishing **bricolage alongside sciences** --- as concomitant propensities
- **Why this dialectical predicament be not accepted in theory as in the practice?**
- ... allow for **joint existence** of **over planned** and **genuinely planned** ... of the “accident” and, public and private ... individual and state equilibrium
- Qualify the virtues of order with the values of chaos
- **Rome illustrate** bricollage: a dramatic settlement with **abrupt collisions, acute disjunctions** ...

The proposition leads to the condition of
the 17 century Rome ...
collision, inextricable fusion,

Tirana as a paradigmatic example

Berlage Institute (Tirana Metropolis)

- The city as an **archipelago**: ... distinct parts - a **concentration of complementary centralities** outside the city center ... reinforcing of what already exists
- **Strategic interventions**: Fine and tuning; Reinforcing patterns and structures; Structuring Tirana's formation; Concentration; Parallel Tirana; Durana

Character of pattern as a spatial device - platform for a more conscious urban condition

“Fine and tuning”: distilling patterns

- **character** extrapolated from each pattern and **reinterpreted** to turn latent potentials into quality of space

Essential character

- The labyrinth – from impermeable to permeable
- The fortress – from excluded to included
- The garden city – from latent to explicit

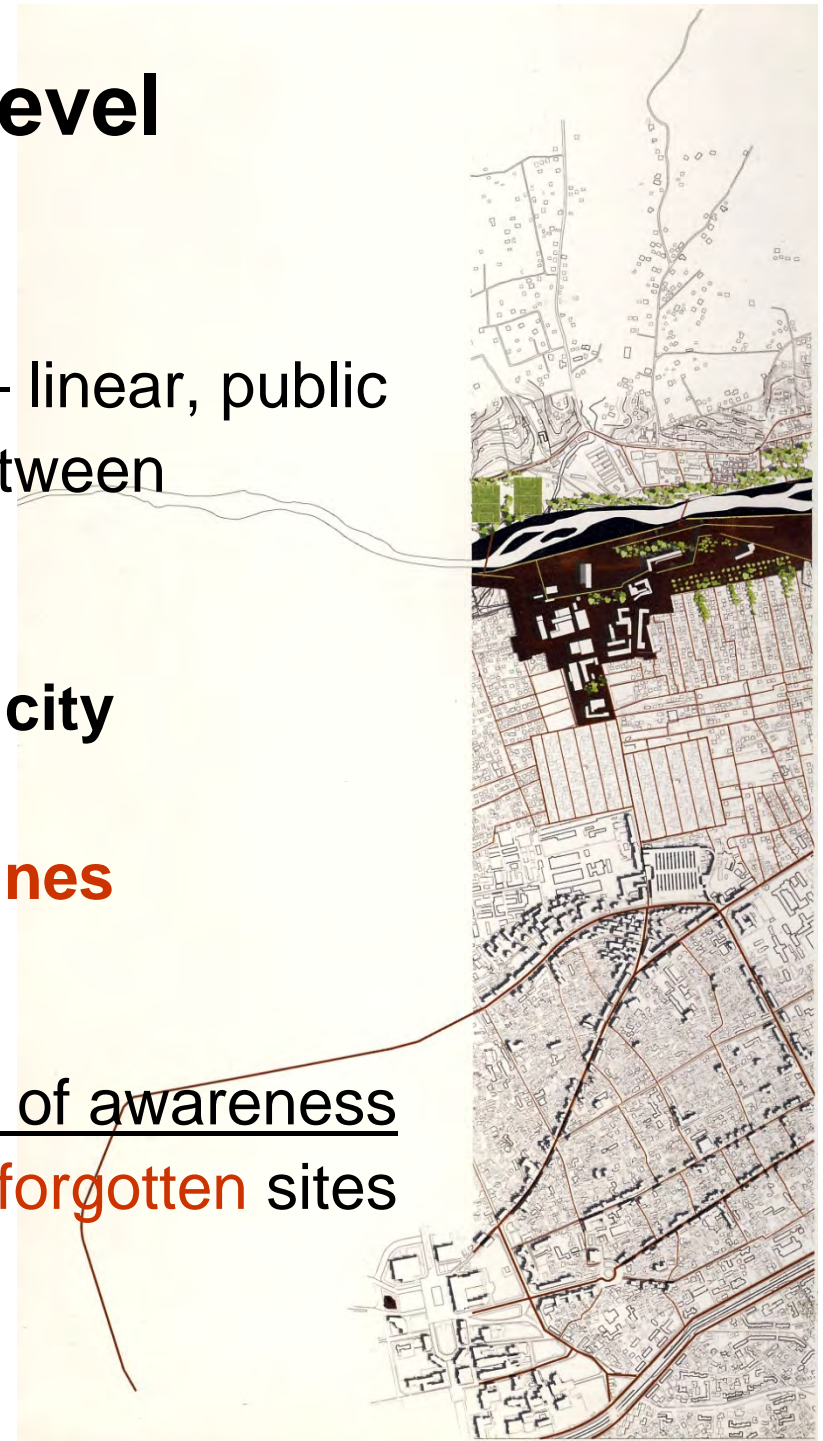


Scars and seams: urban level

not consciously perceived

- **Morphological interruptions** – linear, public
- represent **exceptions** (position between patterns)
- enact a **dialog** across the whole city
- urban **collectors** = new gravity lines

establish greater sense of awareness
urban **gathering** places - **forgotten** sites

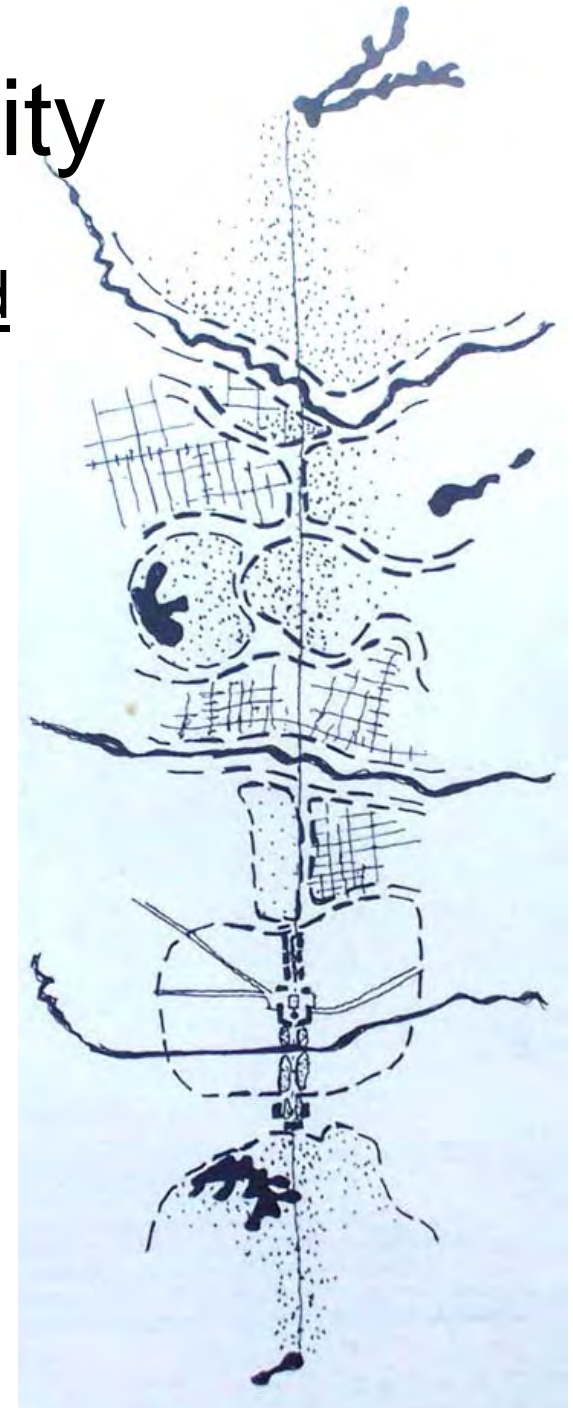


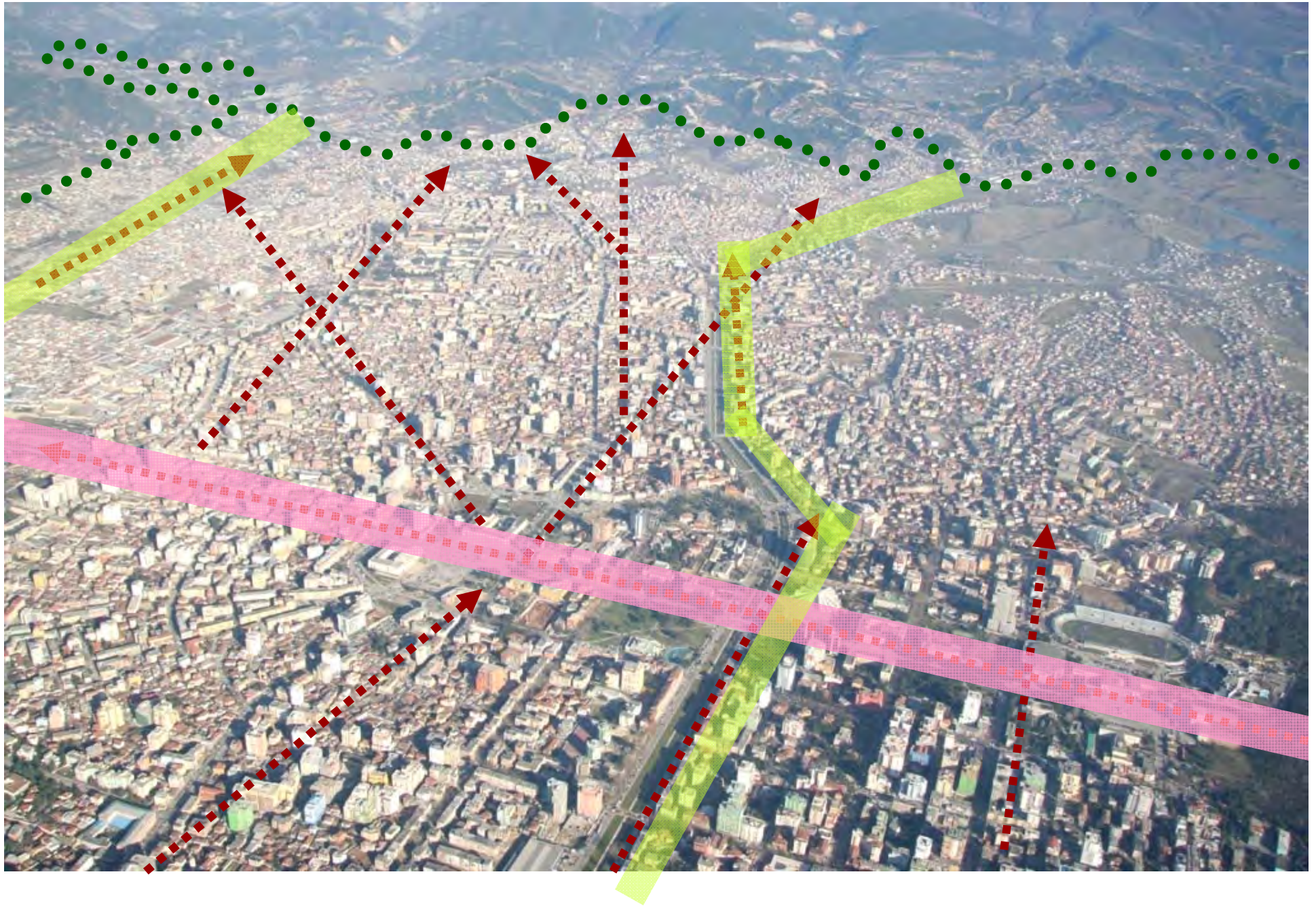
Axes as a new line of gravity

... the relation between the continuity and the sequence of fragments along it;

The axis counteract with the difused urbanisation offering a new **collective experience**, affecting the collective **consciousness**, collecting **independent urban and landscape fragments**,

... not an idealized axis type





The Tirana Axis: A New Ideogram. A new balance between fragment and continuity is achieved. The axis' continuity is not dismissed, nor does it aggressively predominate over the internal logic of the urban parts that constitute the axis.



The Axis.
Symbolized by the first Albanian tram line running along its trajectory, coherence is introduced to the metropolis 'in formation' and the collective imagination of its citizens. The impact of the axis depends as much on its engagement with the different city-fragments in its path as it does with its desire for continuity.

landscape

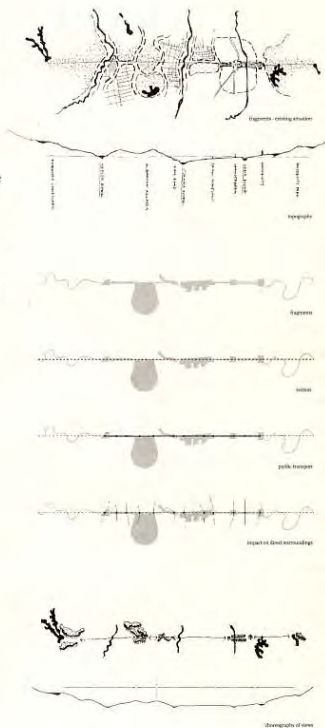
vegetation

infrastructure

built form

From Axis to Section

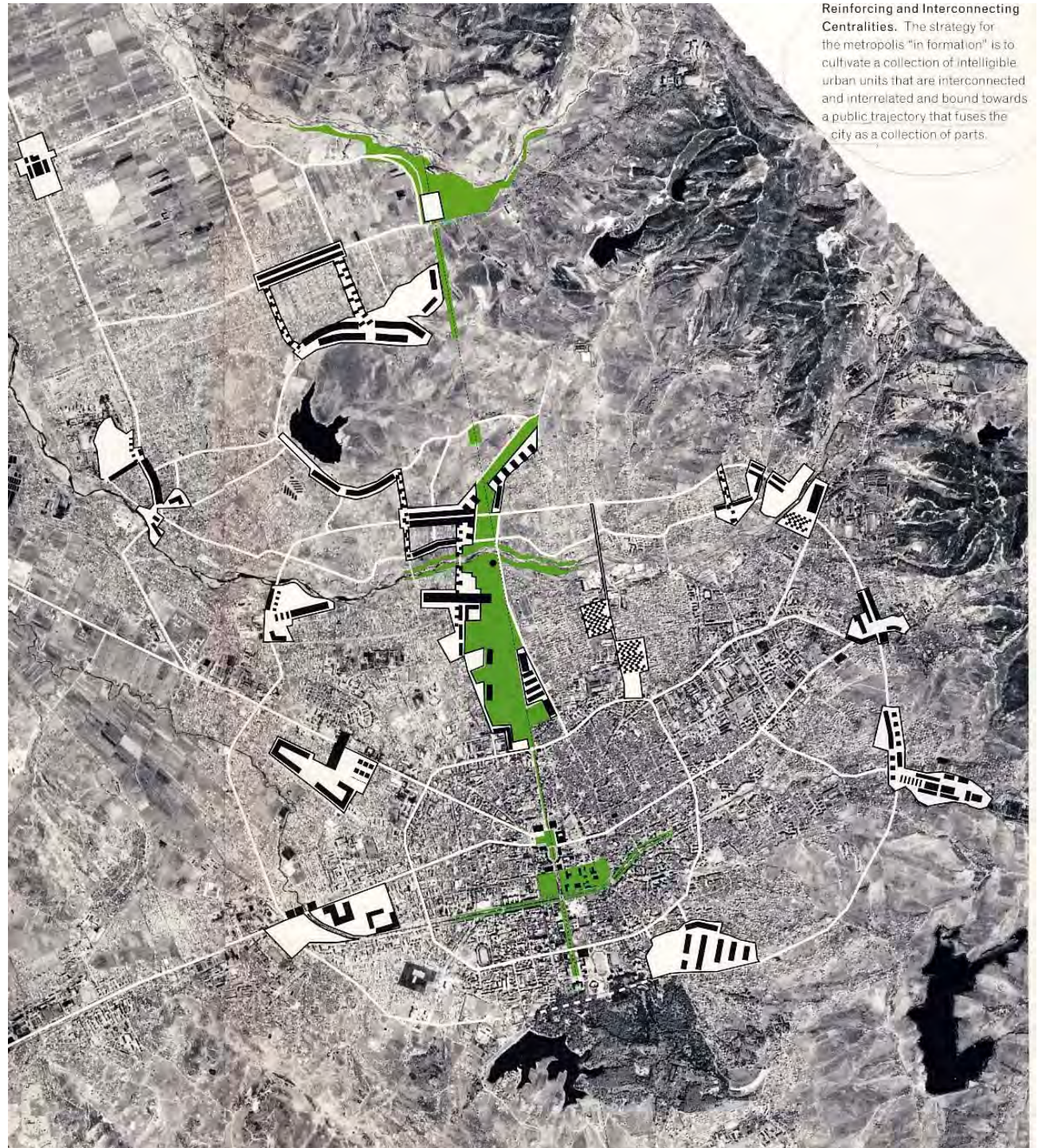
The axis of the boulevard 'Martyrs of Nation' in the historic core continues as a northern trajectory into the periphery, collecting a series of urban and landscape fragments that are engaged to function as a catalogue, or literally a 'cross-section' of the current state of Tirana 'in formation'. Rather than imposing an idealized axis-type upon the existing, we propose to bring precisely this aspect of 'cross-section' into action for the realization of a new civic structure.



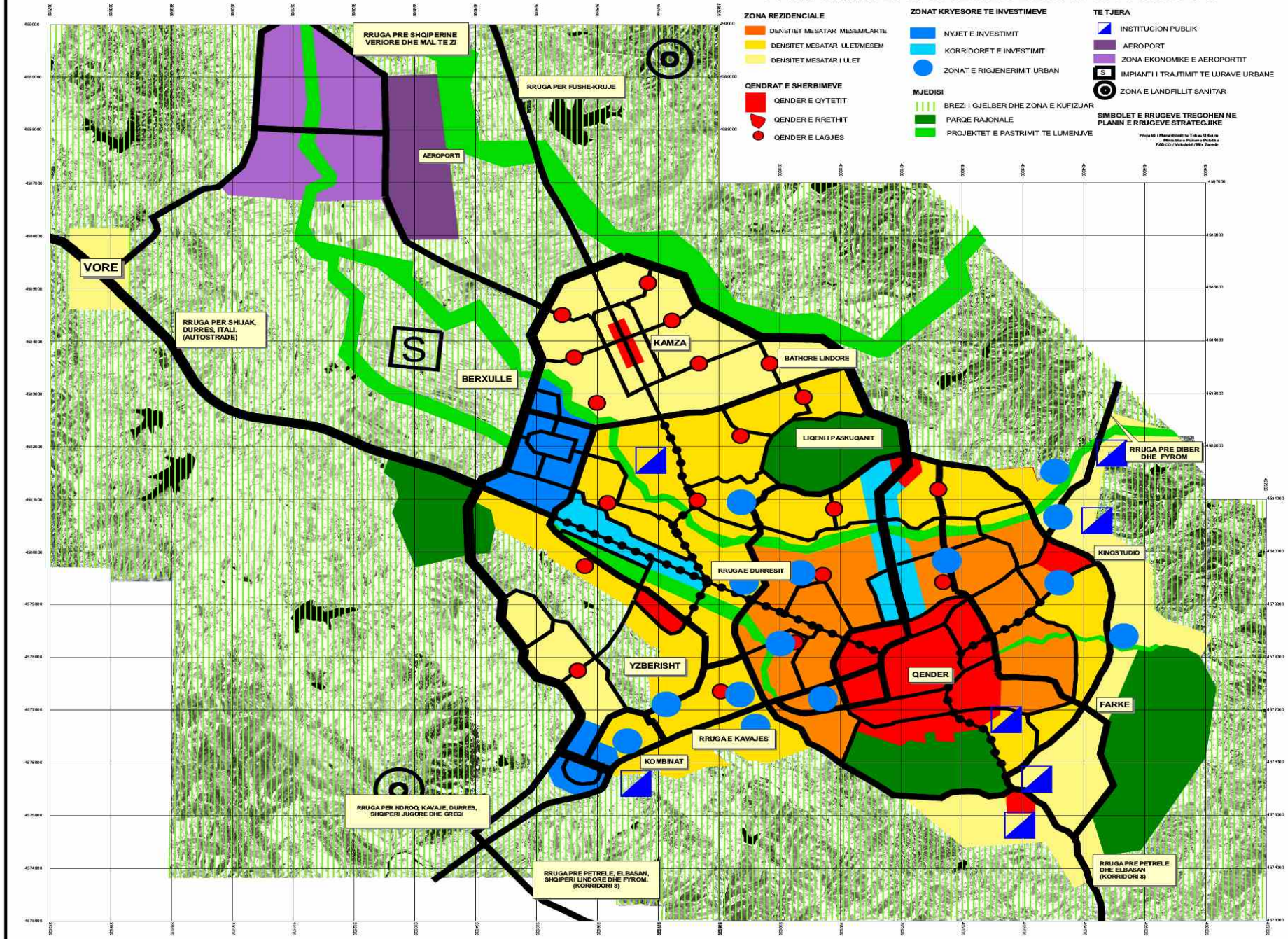
Civic axis



The civic axes
act as a **line of
gravity** (linear
centrality)
generating a
consolidating force
that provide
coherence
and intelligibility
in the metropolitan
area



PLANI STRUKTURAL URBAN I TIRANES SE MADHE PERDORIMI STRATEGJIK I TOKES NE VITIN 2017



PLANI STRUKTURAL URBAN I TIRANES SE MADHE SISTEMI I RRUGEVE STRATEGJIKE (VITI 2017)

LEGJENDA

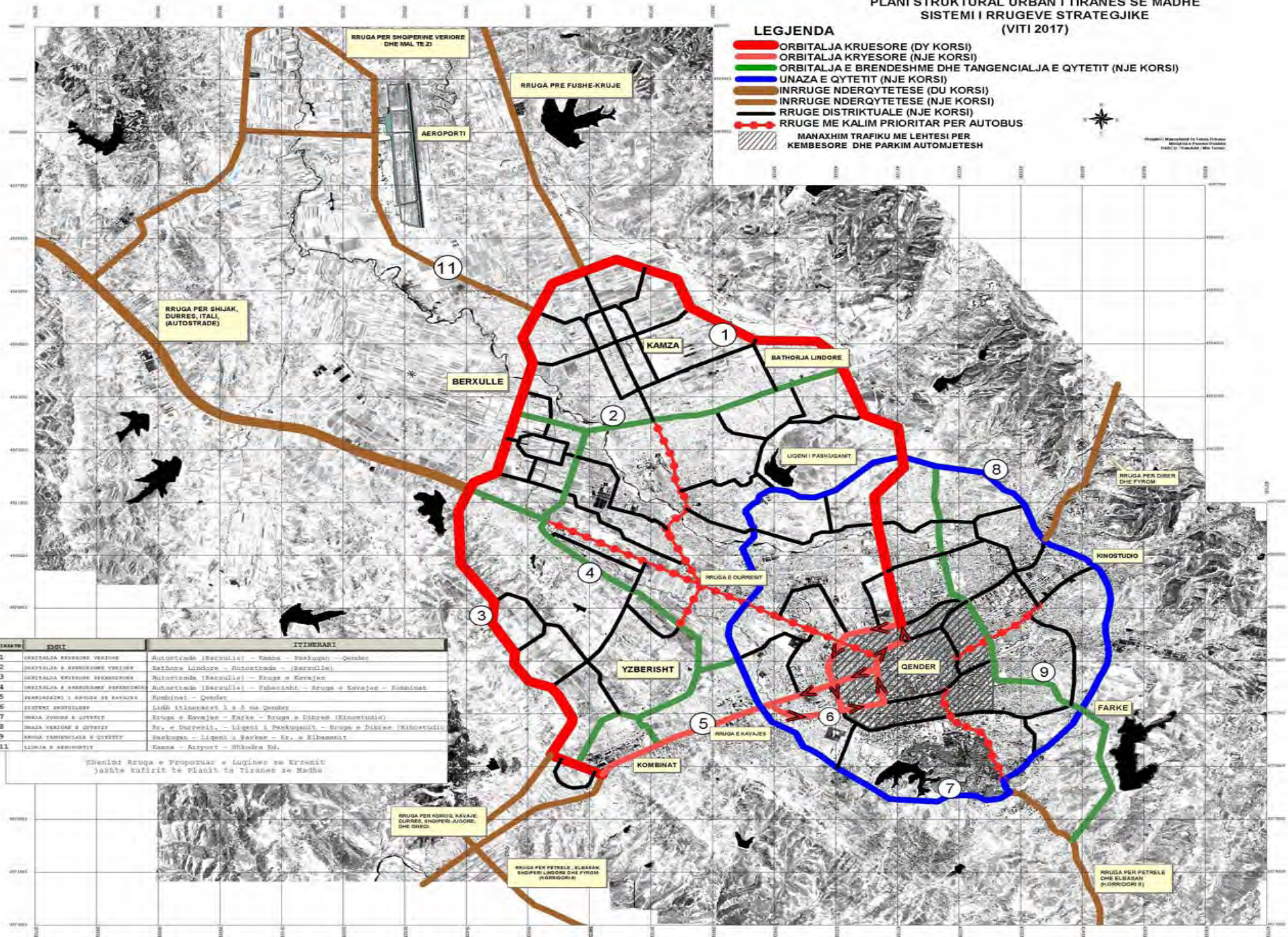
- ORBITALJA KRUESORE (DY KORSI)
- ORBITALJA KRYESORE (NJE KORSI)
- ORBITALJA E BRENDESHME DHE TANGENCIALJA E QYTETIT (NJE KORSI)
- UNAZA E QYTETIT (NJE KORSI)
- INRRUGE NDERQYTETESE (DU KORSI)
- INRRUGE NDERQYTETESE (NJE KORSI)
- RRUGE DISTRIKTUALE (NJE KORSI)
- RRUGE ME KALIM PRIORITAR PER AUTOBUS
- MAHAXHIM TRAFIKU ME LEHESI PER KEMBESORE DHE PARKIM AUTOMJETESH



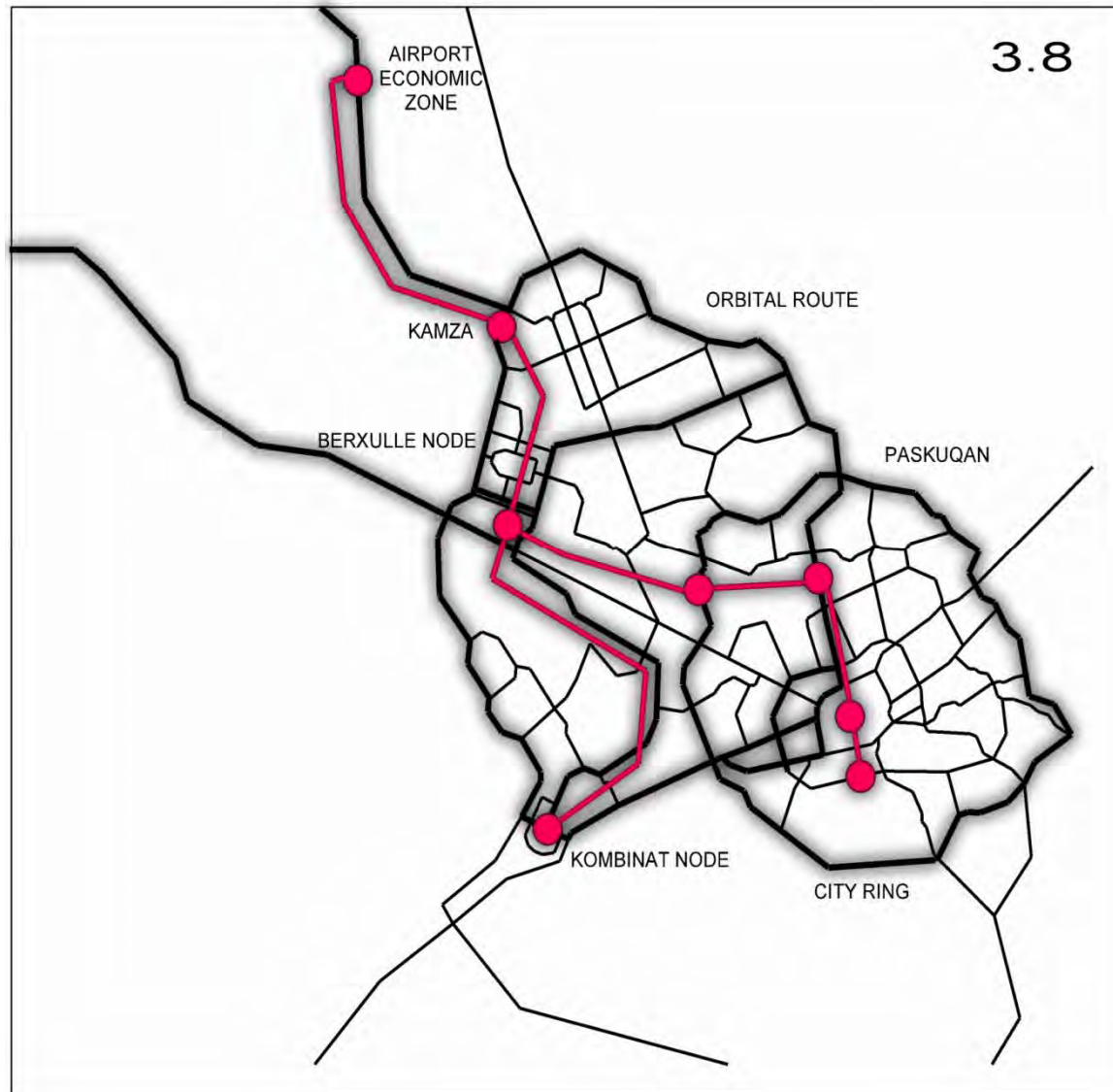
Projetimi i Planit Struktural Urban i Tiranës së Madhe
Bashkia e Tiranës
PARDI (Tiranë), Më 2017

NUMER	RR	ITINERARI
1	ORBITALJA KRUESORE VERIORE	Autostada (Berzullë) - Tërmë - Parkuqan - Qendër
2	ORBITALJA E BRENDESHME VERIORE	Bashkia Lindore - Autostada - (Berzullë)
3	ORBITALJA KRUESORE VERIORE	Autostada (Berzullë) - Rrugë e Kavajës
4	ORBITALJA E BRENDESHME VERIORE	Autostada (Berzullë) - Tërmë - Rrugë e Kavajës - Tërmë
5	ORBITALJA E BRENDESHME VERIORE	Autostada (Berzullë) - Tërmë - Rrugë e Kavajës - Tërmë
6	ORBITALJA E BRENDESHME VERIORE	Autostada (Berzullë) - Tërmë - Rrugë e Kavajës - Tërmë
7	ORBITALJA E BRENDESHME VERIORE	Autostada (Berzullë) - Tërmë - Rrugë e Kavajës - Tërmë
8	ORBITALJA E BRENDESHME VERIORE	Autostada (Berzullë) - Tërmë - Rrugë e Kavajës - Tërmë
9	ORBITALJA E BRENDESHME VERIORE	Autostada (Berzullë) - Tërmë - Rrugë e Kavajës - Tërmë
10	ORBITALJA E BRENDESHME VERIORE	Autostada (Berzullë) - Tërmë - Rrugë e Kavajës - Tërmë
11	ORBITALJA E BRENDESHME VERIORE	Autostada (Berzullë) - Tërmë - Rrugë e Kavajës - Tërmë

Shënim: Rrugë e Propozuar = Liniues në Erzenit
jashtë kufirit të Planit të Tiranës së Madhe



Transport Forecast



TIRANA: A NEW EUROPEAN CITY

B: INTERVENTION

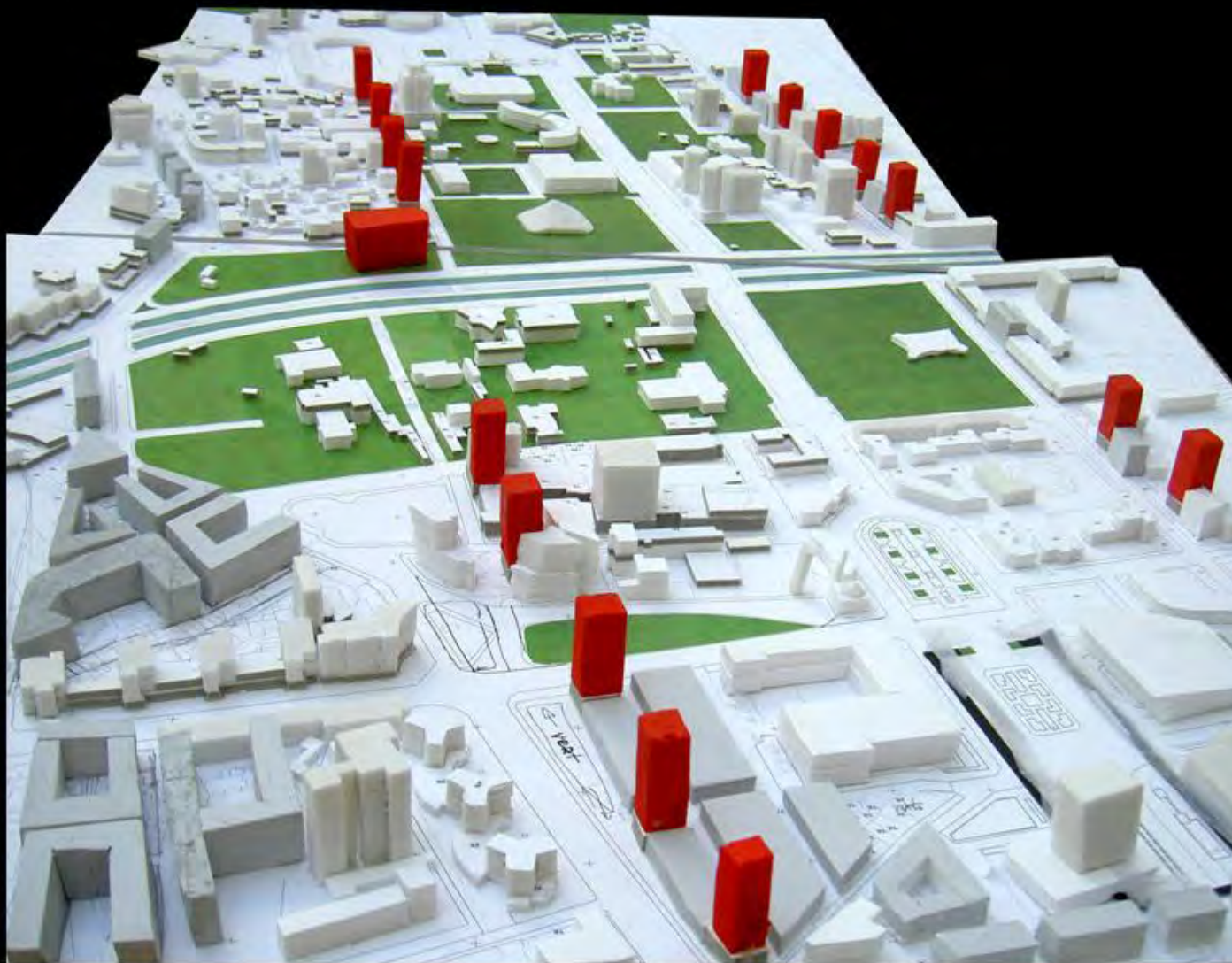
URBAN USES

URBAN USES



TIRANA: A NEW EUROPEAN CITY

STUDY MODEL



TIRANA: A NEW EUROPEAN CITY

A. ANALYSIS:

QUALITIES TO REMODEL

RYTHM AND ORDER



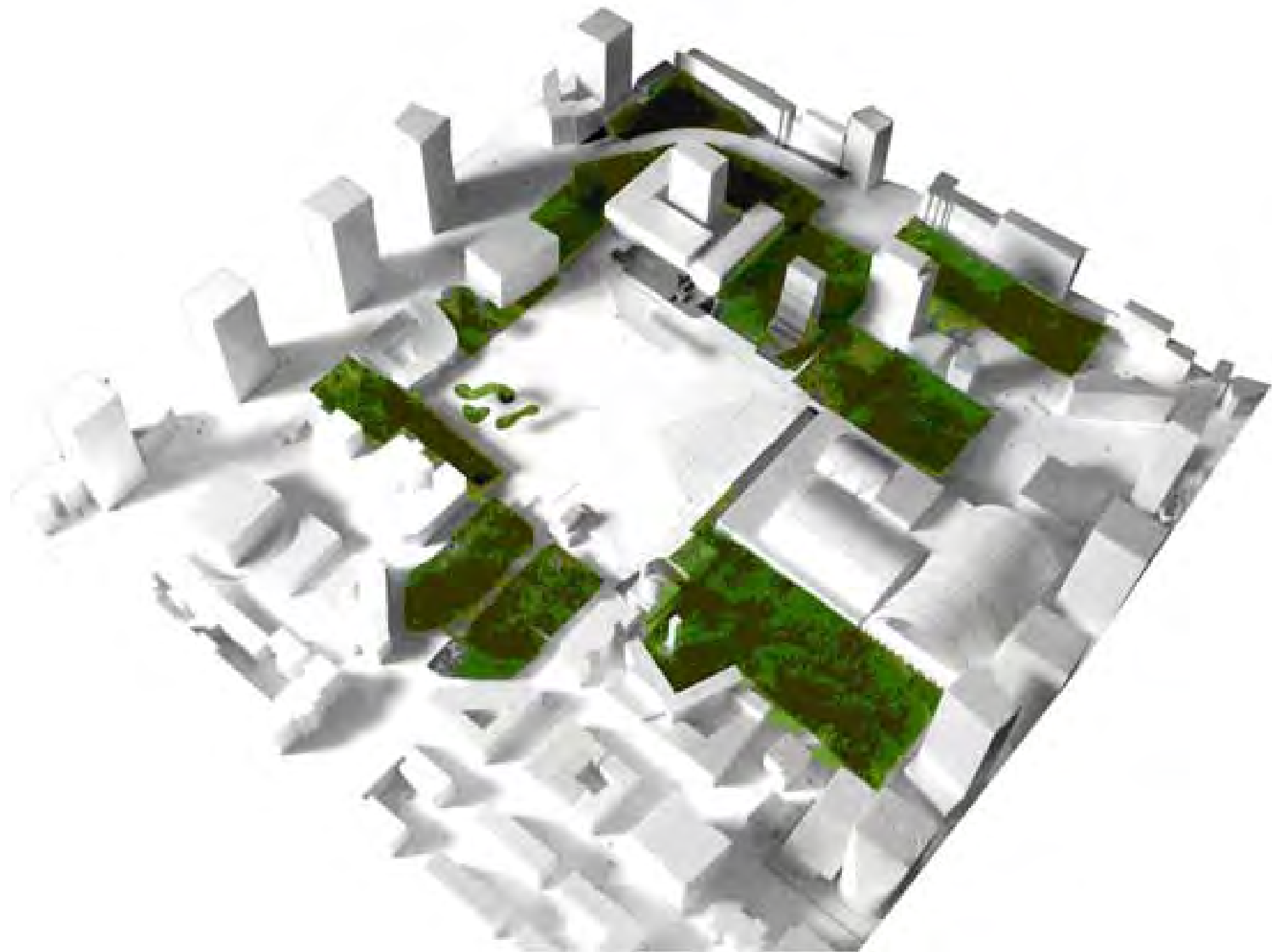
Mast

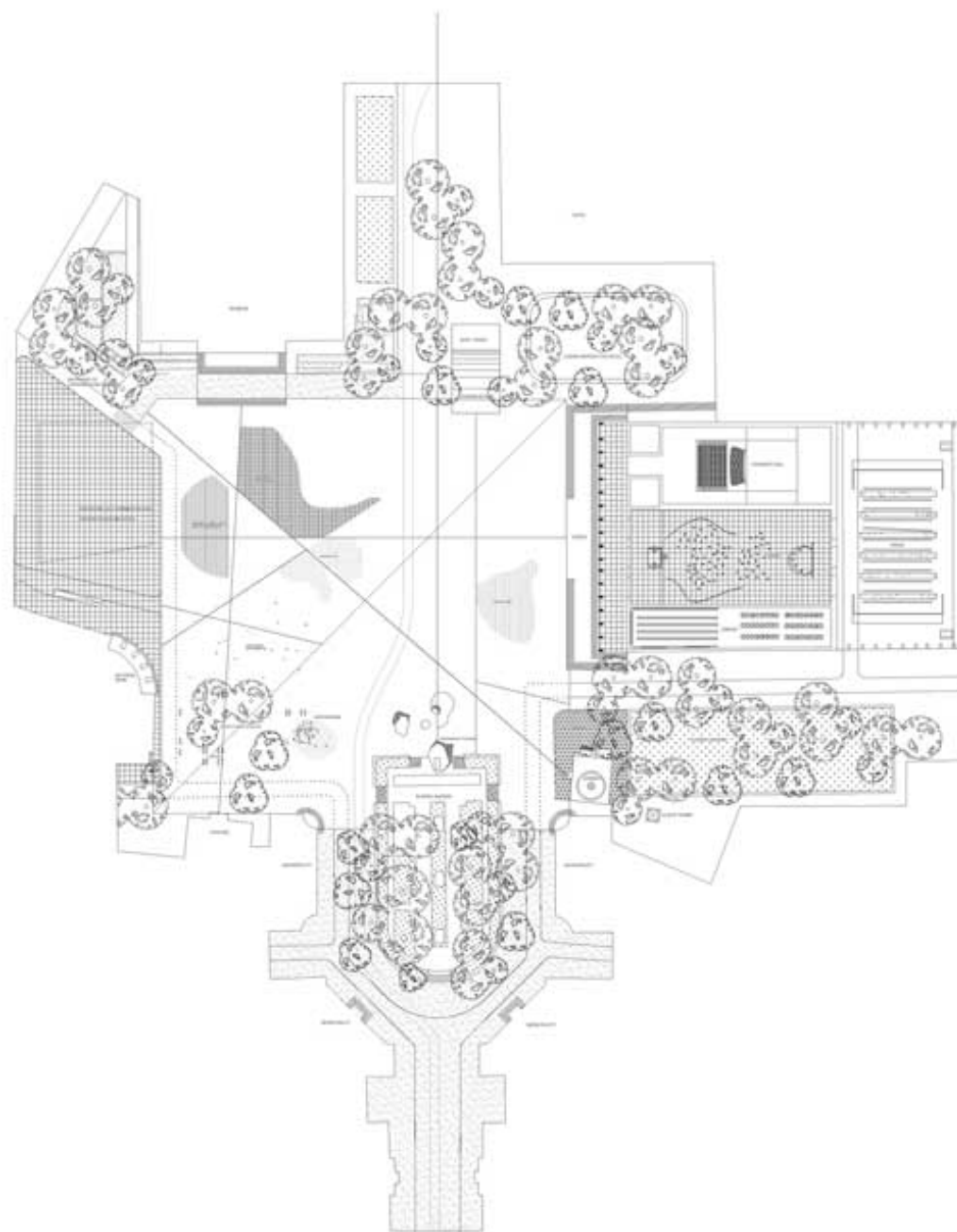


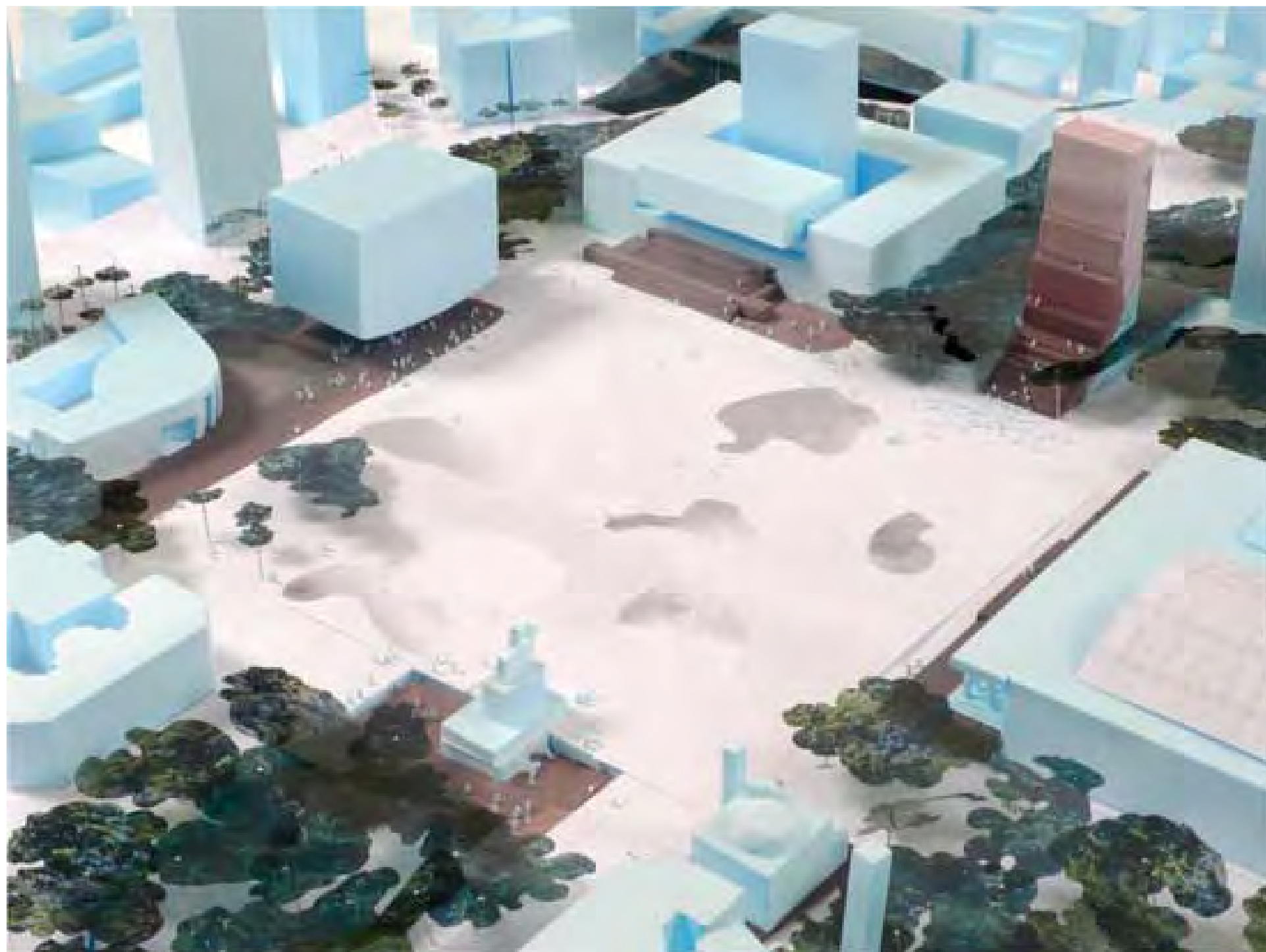


“French Plan” a more readable city center















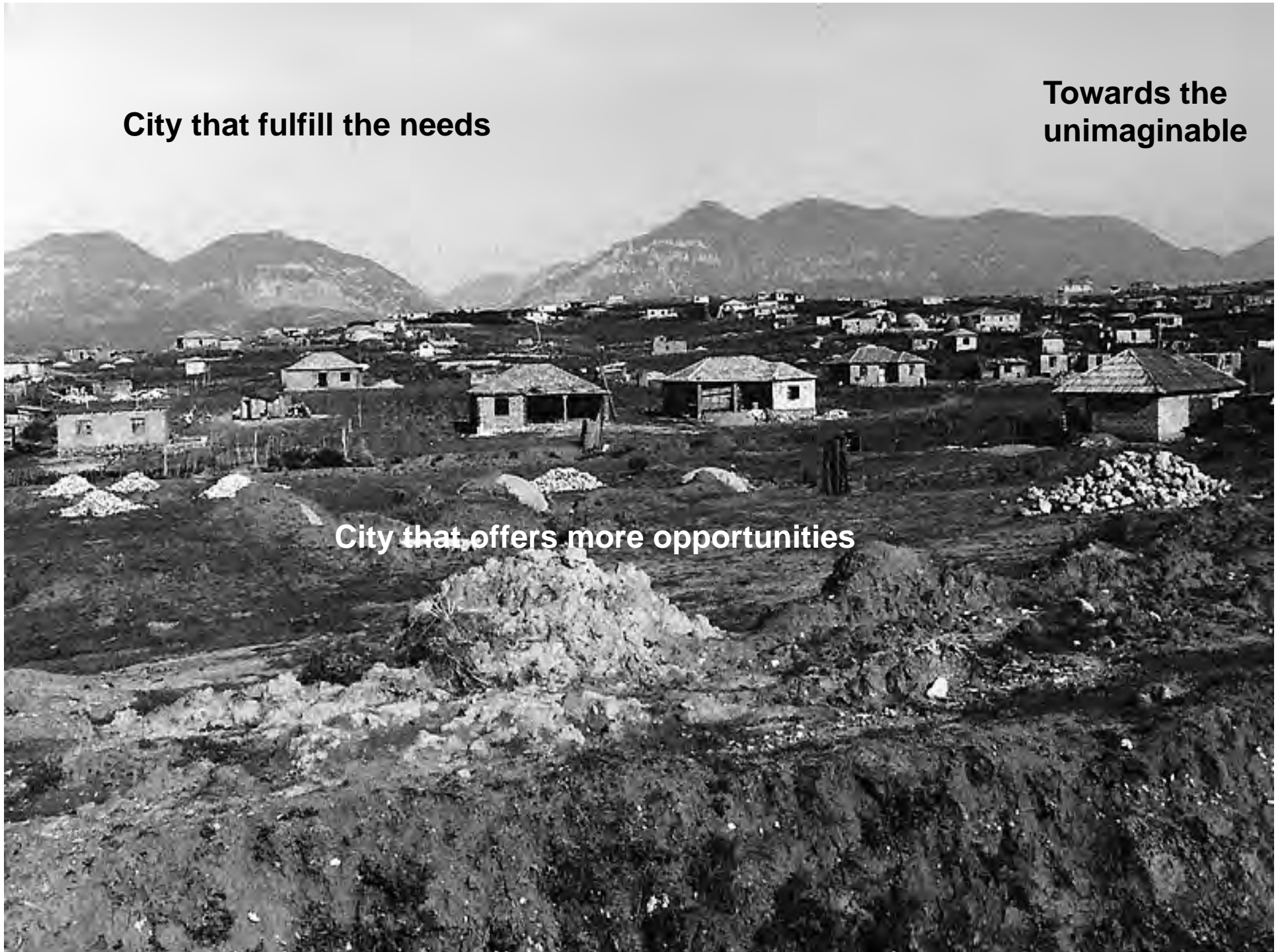




City that fulfill the needs

**Towards the
unimaginable**

City that offers more opportunities



06/01/2004

Lana River Drift Garden
View South towards the Lana
River











... a place where
people and
architects have fun
with architecture
...